

Company Summary

SITE SURVEILLANCE & SECURITY

BIGView | Jetstream Systems 2025

Introduction

Manufacturer | Distributor | On-Site Integrator

Since 2009, Jet Stream Systems has delivered trusted security and surveillance solutions nationwide, partnering with industry leaders to provide advanced technology and custom solutions. Our BIGView Surveillance Trailer offers self-contained, robust security for construction sites, law enforcement, and critical infrastructure across North America.

Who We Are

Jet Stream Systems has been a trusted provider of security and surveillance solutions since 2009, expanding nationwide in 2013. We partner with industry leaders like Milesight, Obseron, AKUVOX, and Uniview to deliver cutting-edge security technology.

Through our sister company, Jet Stream Tactical, we design and service tactical vehicles for law enforcement, supporting 93 armored units across North America.

What We Do

We specialize in custom surveillance solutions, including access control cameras, thermal cameras, and advanced alarm systems. As the engineer and manufacturer of the BIGView Surveillance Trailer, we provide self-contained security solutions for construction sites, law enforcement, industrial facilities, and critical infrastructure.

Our trusted solutions are used by major organizations such as Viega, Cessna, Ascension Healthcare, Nestle, JCB Equipment, Bell Helicopter, 3M, Thyssenkrupp, and Caterpillar.





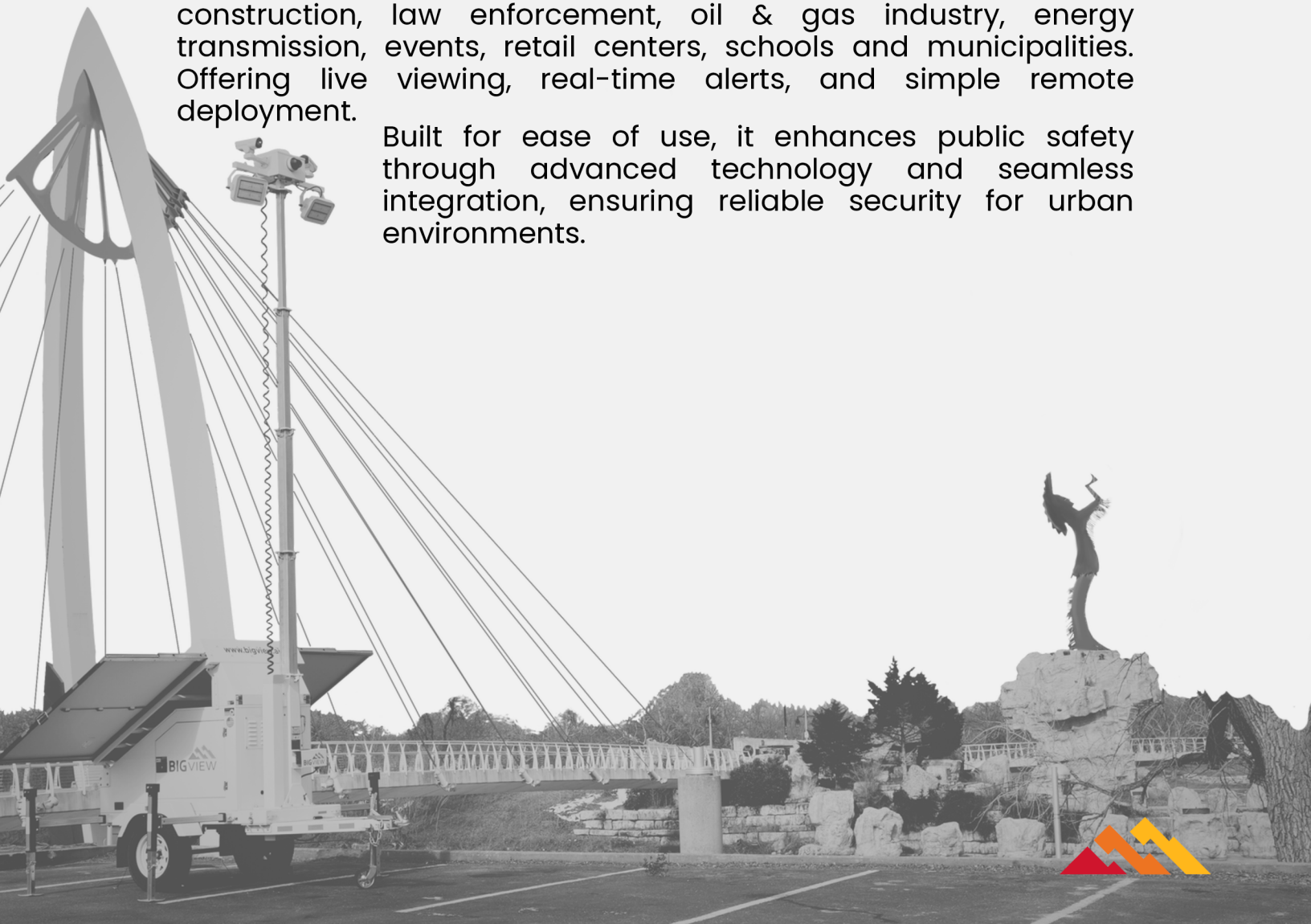
AN EFFICIENT SURVEILLANCE SOLUTION

Recognizing the challenges in today's economy - rising crime and increasing insurance costs - we launched BIGView, a cutting-edge, tailor-made surveillance solution designed to enhance efficiency and security for organizations.

WHAT IS BIGView?

BIGView is an all-in-one surveillance solution designed for construction, law enforcement, oil & gas industry, energy transmission, events, retail centers, schools and municipalities. Offering live viewing, real-time alerts, and simple remote deployment.

Built for ease of use, it enhances public safety through advanced technology and seamless integration, ensuring reliable security for urban environments.



BIGView Trailer: Fast, Reliable Security

Set up in 10 minutes, BIGView connects your site with built-in WiFi and eliminates extra setup.

24/7 Remote Monitoring

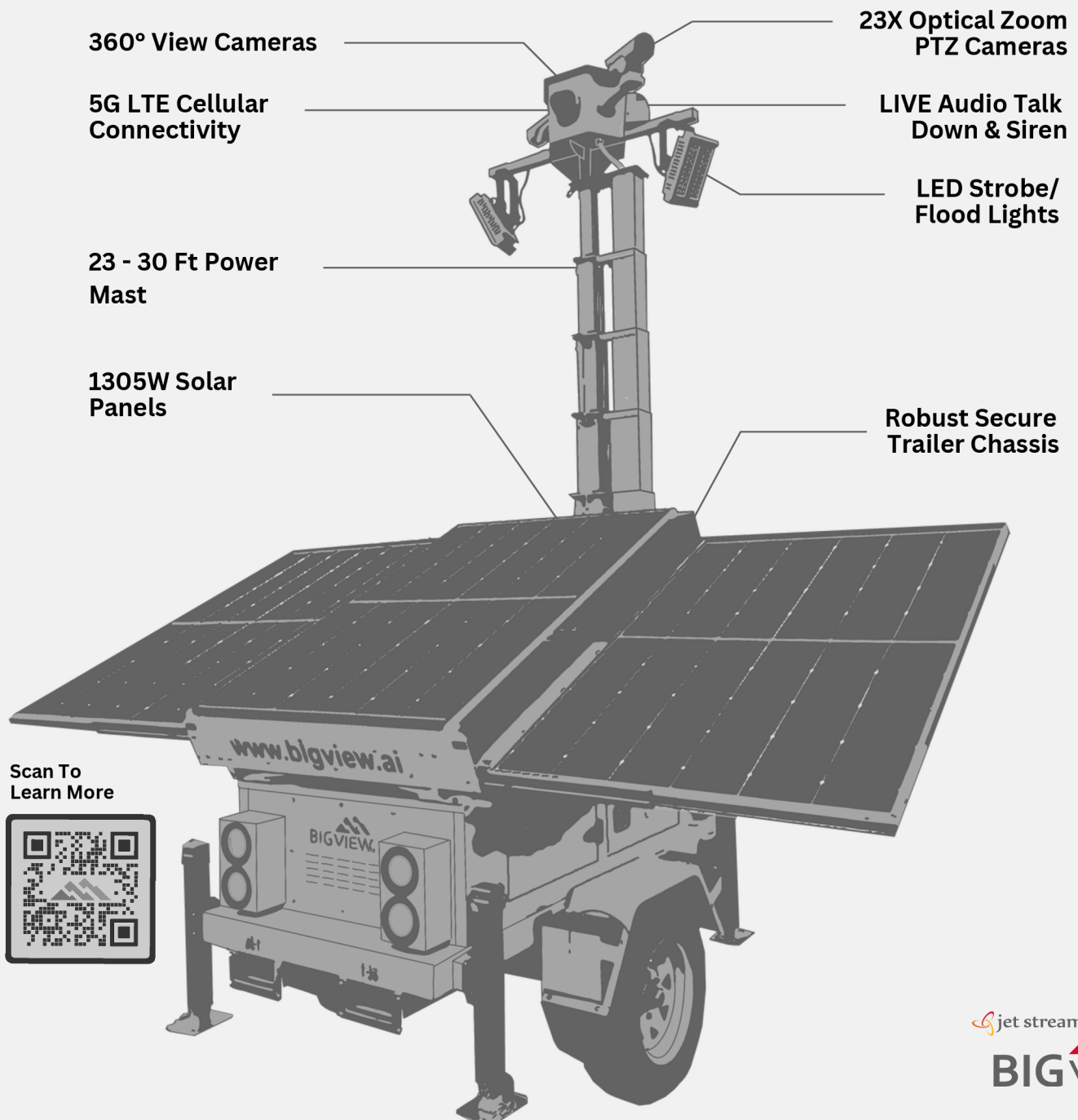
Live surveillance with UL-certified monitoring, real-time police response, and 23x PTZ cameras with spotlights ensure full coverage.

Tailored for Your Organization

Equipped with trackers, sirens, strobes, and two-way communication, BIGView is customized to meet your needs.

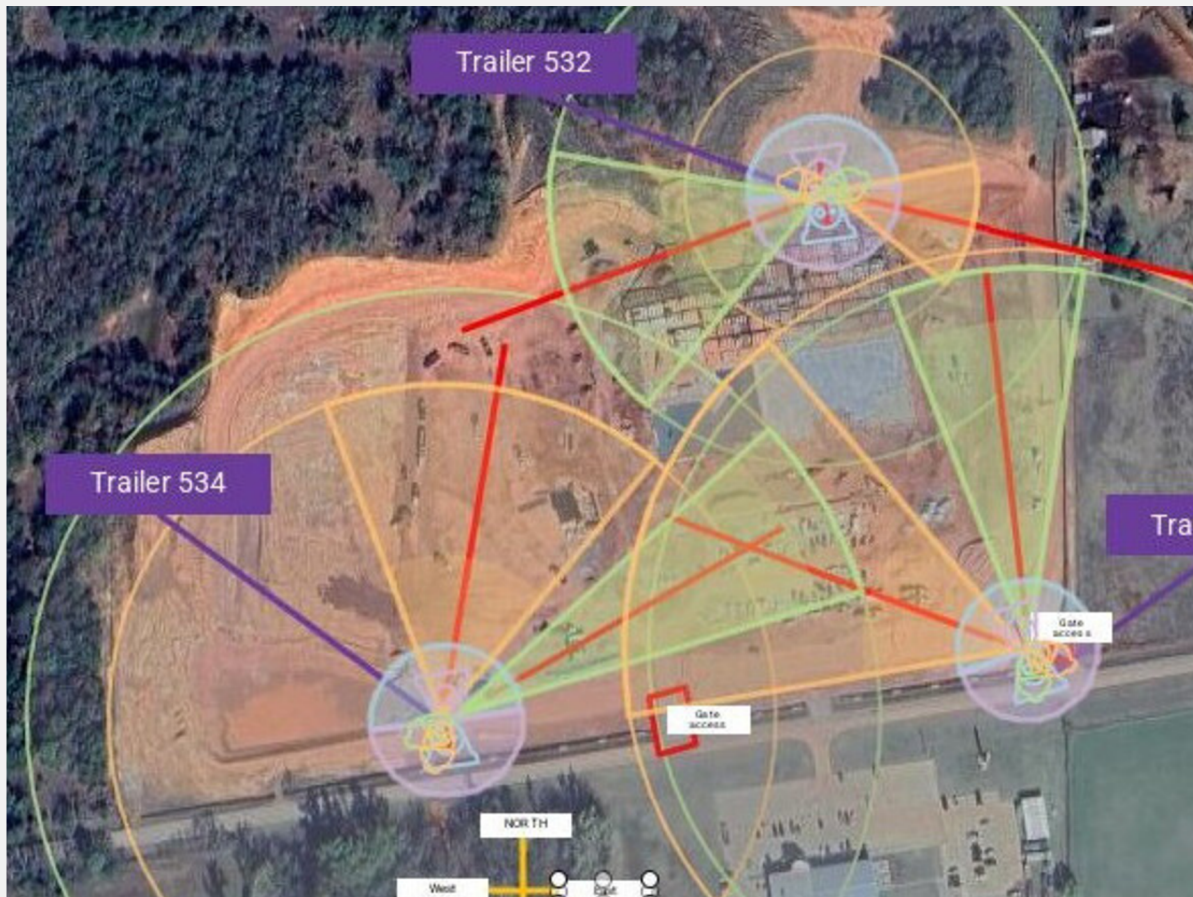
Security You Can Trust

Jet Stream Systems provides clear pricing and tailored solutions for total peace of mind.



BIGView Has You Covered

This diagram highlights the extensive surveillance range provided by the BIGView trailer. From its 2x 180° Fisheye lenses and 23X Optical Zoom PTZ cameras to spotlight-enhanced night monitoring, BIGView ensures complete site security with minimal blind spots.

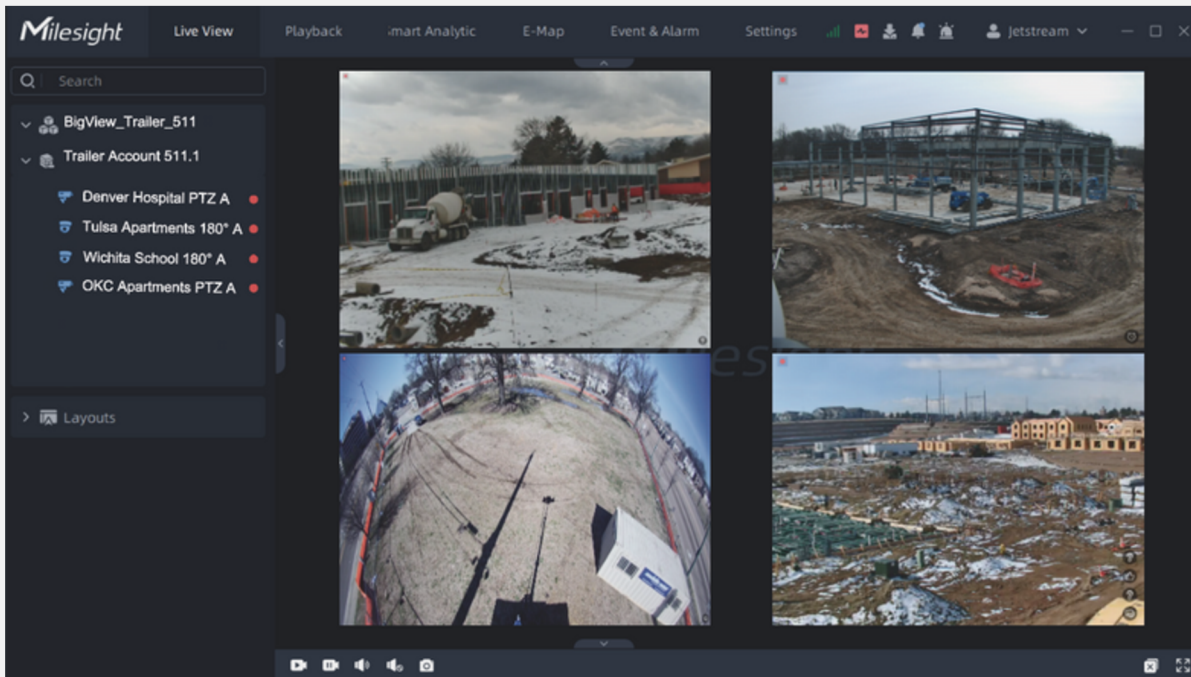


Remote Support Services

Jetstream is committed to delivering unparalleled quality and reliability. That's why we provide both remote support and onsite maintenance, ensuring your surveillance systems remain fully operational. As a locally based company, we take pride in being close to our clients, offering quick response times and personalized service.

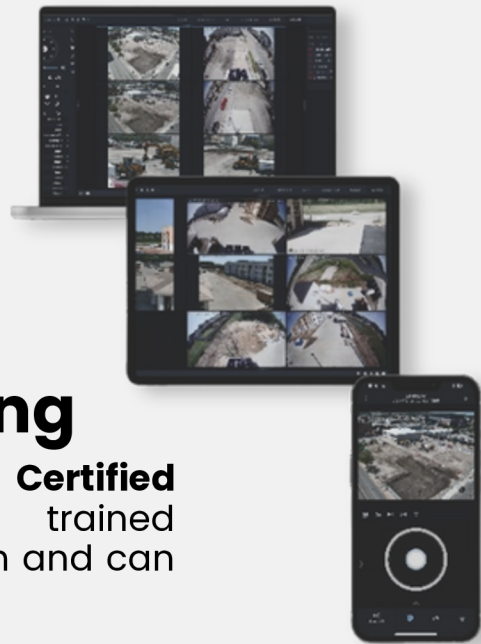
Never Miss A Thing

BIGView allows you to bring multiple sites together into a single pane empowering you to have the big view to make the big decisions for your organization.



Always In Site

BIGView trailers come equipped with Milesight, an industry-leading VMS, giving you instant access to all your sites and can also seamlessly integrate with your existing system.



24/7 Remote Monitoring

For added protection, our **optional UL Certified 24/7 monitoring service** ensures trained professionals are always keeping watch and can dispatch authorities on your behalf.

Leadership

Shawn Spaeny – President / Founder

As the founder of Jet Stream Systems and the visionary creator of BIGview Surveillance Trailers, he specializes in offering advanced security and monitoring solutions for construction sites and essential infrastructure. With a strong background in security technology and surveillance integration, he has guided Jet Stream Systems in providing innovative, scalable solutions across the country. His proficiency in remote monitoring and tactical surveillance has established BIGview as a frontrunner in site security and operational effectiveness.

Office: 316-512-3263

Cell: 316-208-9248

Email: Shawn@Jetstreamsys.com

Jarod Stice – Chief Operations Officer / Business Development

A graduate of Pittsburg State University, Jarod Stice brings a strong background in construction and over 15 years of corporate banking experience. As a dynamic entrepreneur, he has played a pivotal role in driving growth and innovation at Jet Stream Systems and BIGview. His strategic leadership and business acumen continue to shape the company's success in the security and surveillance industry.

Office: 316-330-3441

Cell: 620-605-8886

Email: Jarod@Jetstreamsys.com

Rodger Kistler – BIGview Division Manager

With 20 years of global humanitarian project management, Rodger Kistler is passionate about empowering individuals, strengthening communities, and creating opportunities. As the forward-facing leader of BIGview, he builds business on relationships and is deeply committed to protecting organizations and the communities they serve through innovative security solutions.

Office: 316-330-0014

Cell: 903-258-0078

Email: Rodger@BIGView.ai

Kirk Myres – Director of Field Services and Integration

With 15+ years in security and surveillance, Kirk Myres has worked on Department of Defense contracts and led field teams for the nation's largest security integrator. He specializes in advanced integration of surveillance systems, access control, and security solutions. A key partner since Jet Stream Systems' inception, he continues to drive innovation and success.

Office: 855-861-6916

Email: Kirk@jetstreamsys.com



	Yes	No	N/A
The perimeter security system is custom designed to cover 100% of the site perimeter.	<input checked="" type="checkbox"/>	<input type="checkbox"/>	<input type="checkbox"/>
UL Listed monitoring center is owned and operated by the vendor (not subbed out to 3rd party) and is not located outside of North America.	<input checked="" type="checkbox"/>	<input type="checkbox"/>	<input type="checkbox"/>
The system is operational in low light conditions using either IR illumination or thermal imaging.	<input checked="" type="checkbox"/>	<input type="checkbox"/>	<input type="checkbox"/>
System implements automatic visual content analytic capabilities to detect and discriminate (in real time) the intrusion of persons or vehicles along the site perimeter. Utilize zone calibration functionality to minimize false alerts.	<input checked="" type="checkbox"/>	<input type="checkbox"/>	<input type="checkbox"/>
System prompts an immediate response from the monitoring center upon verification of a trespasser.	<input checked="" type="checkbox"/>	<input type="checkbox"/>	<input type="checkbox"/>
System is "armed" during all non-working hours. It also implements a failsafe method to automatically "arm" the system based on a pre-determined time schedule.	<input checked="" type="checkbox"/>	<input type="checkbox"/>	<input type="checkbox"/>
Live audible voice-over to "talk down" an intruder along the site perimeter in real time. Strobe or lighting feature as a visual indication to the intruder that the system has detected their presence.	<input checked="" type="checkbox"/>	<input type="checkbox"/>	<input type="checkbox"/>
Install a battery backup system capable of running the entire security system for a minimum of 4 hours.	<input checked="" type="checkbox"/>	<input type="checkbox"/>	<input type="checkbox"/>
Ensure both the primary and backup power systems are tamper-proof. Monitor battery health continuously. Automatically notify the monitoring center to dispatch site personnel if power levels are low.	<input checked="" type="checkbox"/>	<input type="checkbox"/>	<input type="checkbox"/>
All cameras used are NDAA compliant. Fixed cameras should be used to provide full perimeter coverage. PTZ cameras can be used in addition to this coverage, but not in lieu of.	<input checked="" type="checkbox"/>	<input type="checkbox"/>	<input type="checkbox"/>
On the standard square/rectangular site, there should be a minimum of 4 camera stations (at each corner). This serves as a visual deterrent from all sides. On unique shaped tracts (pie shape), this can be reduced to 3 stations.	<input checked="" type="checkbox"/>	<input type="checkbox"/>	<input type="checkbox"/>

Coverage and Certification

BIGView Provides coverage contiguously across the United States. We do not provide service at this time to AK & HI. BIGView- Jet Stream systems has an exclusive contractual joint venture with a partnered UL-certified center. Enabling a seamless and dedicated partnership to meet projects unique requirements. Our monitoring team is based in the United States and does not out source any information or monitoring. They consistently maintain a Five Diamond certification.

Real-time Intrusion Detection

- Our systems use advanced motion detection technology to detect and discriminate between persons and vehicles in real-time along site perimeters.
- These systems reduce false alerts through automatic visual content analytics and virtual fence (zone) calibration. Capturing events promptly by verification thru monitoring and immediate response.

Site Perimeter Coverage

On site we cover:

1. No fewer than (4) cameras.
2. Cover 100% of the site perimeter.
3. Provide coverage in low light conditions.
4. All cameras provide infrared (IR) technology for enhanced low light conditions.
5. Each of our units provide 360° coverage directly underneath our mast.
6. We position coverage to cover near-distance blind spots around each unit.
7. Work to meet all underwriters discretionary changes.

Construction Hour Monitoring

- Monitoring systems are armed (response enabling) during all non-working construction hours.
- Each site is equipped with failsafe methods to arm itself based on a pre-determined schedule. Ensuring that surveillance systems are always operational and able to detect potential intrusions or security breaches during non-working hours.

Hourly Requirements

- Systems are armed during non-working hours.
- Failsafe methods of arming are in place based upon a pre-determined schedule.
- Complete perimeter monitoring during non-working/ off-hours reducing risk of security breaches during periods of low activity on site.
- Every system is monitored around the clock for any issues.

Solar Power Units and Batteries

- Each BIGView TR1305 is equipped with dual 200Ah Lithium batteries equal to over 900Ah of AGM power capacity. Enabling each unit to survive over a 72 hour period without any solar charge.
- Placement of solar units are based on sunlight exposure for each site.
- Batteries are monitored for any possible errors or health issues.
- Alerts to a monitoring team are sent to our technology team as well. Resulting in speedy diagnosis and repair.

Loss of Power Protocol

- Alerts will trigger, prompting the monitoring center and technology team.
- Communication is sent to the technology and monitoring teams demanding a quick response to monitor and fix any power loss issue.
- Each unit is equipped with Solar and AC power sources on board. Each unit is autonomous, meaning power supply is not daisy chained together with another unit.

Unlock the full potential of your project with our cutting-edge solutions! Contact us today at **855-861-6916** to explore our capabilities and discover how we can support your organization's success. Let's build something great together!